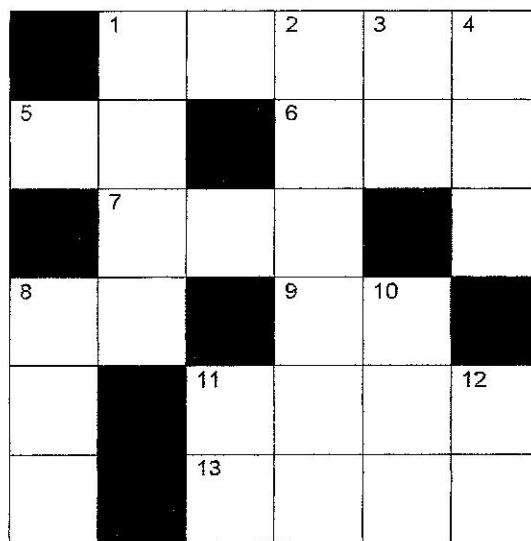


## PROBLEM SET: METRIC SYSTEM AND METRIC MATH

**BACKGROUND:** When ever scientific data is collected it must be recorded accurately and carefully. In addition, data gathered by different groups should be measured using the same system of units (metric vs. english). This allows data to be averaged or compared, thus improving the researchers ability to analyze and understand the results of an experiment. You will find that the comparison and averaging of data within your ISP class is a normal practice. We encourage you to gain proficiency in the use of measurement systems so that you can play an important role in helping your classmates achieve success in science.

**PROCEDURE:** Answer the problems, then fill in the appropriate numbers in the crossword puzzle... Hint: ALL of the rows and columns in the puzzle add up to twenty. Watch the units associated with each problem!!



**Problems for Across:**

- 1. 723.44 m = \_\_\_\_\_ cm
- 5. 30 cm + 0.1 dm = \_\_\_\_\_ cm
- 6. 507 mm + 4 cm = \_\_\_\_\_ mm
- 7. 90 m + 820 cm = \_\_\_\_\_ dm
- 8. 73000 L = \_\_\_\_\_ kL
- 9. 275000 mL ÷ 0.05 hL = \_\_\_\_\_ L
- 11. 0.211 g + 41.52 dg = \_\_\_\_\_ mg
- 13. 0.3095 kg + 31200 cg = \_\_\_\_\_ dg

**Problems for Down:**

- 1. 71.93 m = \_\_\_\_\_ cm
- 2. 352.532 g = \_\_\_\_\_ mg
- 3. 2.2 dam + 220 dm = \_\_\_\_\_ m
- 4. 0.999 kg - 528 g = \_\_\_\_\_ g
- 8. 373 L x 2000 mL = \_\_\_\_\_ L
- 10. 22.44 m + 4 cm = \_\_\_\_\_ cm
- 11. 0.097 km - 5100 cm = \_\_\_\_\_ m
- 12. 0.0175 kg x 200 cg = \_\_\_\_\_ g